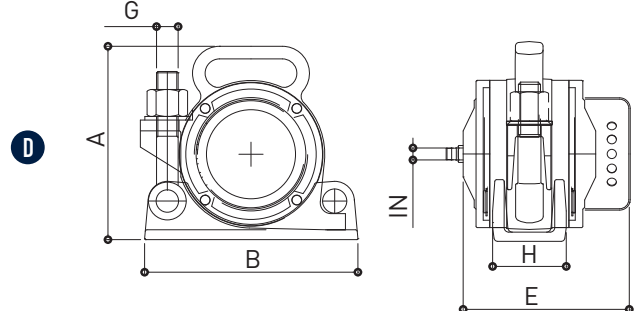
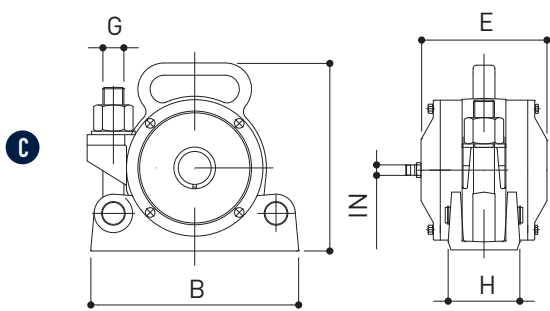
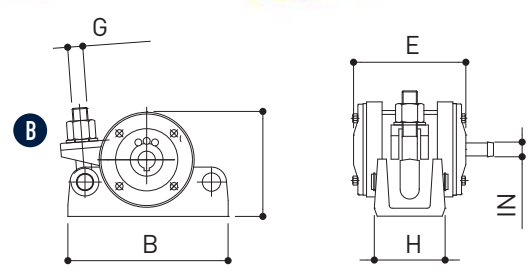
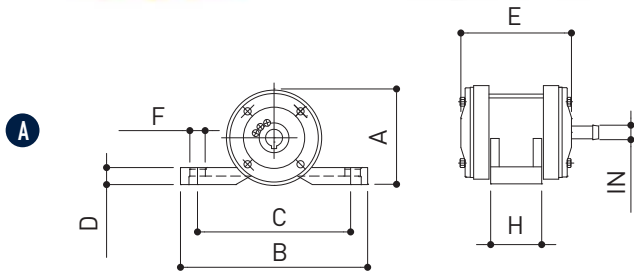




# Pneumatic vibrators



MODEL	WORKING PRESSURE	VIBRATION	CENTR. FORCE	AIR CONSUMP.	NOISE LEVEL	OVERALL DIMENSIONS										
						DRAWING	A	B	C	D	E	F	G	H	IN	WEIGHT
							mm	mm	mm	mm	mm	mm	mm	mm	mm	mm
HFP 600P	6	17,000	720	1,000	100	A	111	220	180	20	164	20	-	60	15	6.3
HFP 1000P		16,500	1,122	1,100			7.2									
HFP 1400P		16,000	1,453	1,200			7.3									
HFP 600C	6	17,000	720	1,000	100	B	120	180	-	-	164	-	18	94	15	6.3
HFP 1000C		16,500	1,122	1,100			7.2									
HFP 1400C		16,000	1,453	1,200			7.3									
HFP 2700C		16,000	2,753	1,600	103	C	224	238	-	-	160	-	24	84	15	14
HFP 4000C		15,200	4,079	1,800			14.5									
HFP 6000C		14,500	6,118	1,800			16.3									
HFP 4001C*	6	10,200	4,079	1,800	90	D	215	240	-	-	180	-	24	84	15	18

## PNEUMATIC VIBRATORS FOR CONCRETE CONSOLIDATION

**APPLICATION** Concrete formworks in situ  
Concrete moulds in precast industry

### FEATURES

**WORKING PRESSURE** 6 bar

**AIR SUPPLY QUALITY** Class 5.4.4

**WORKING TEMPERATURE** -10°C +60°C

**MAX NOISE LEVEL** 103 dB(A)  
Silent version HFC 4001C: 90 dB(A) at 1 meter distance

**TECHNOLOGY** Eccentric rotor

**MATERIALS** Steel and cast iron

**CERTIFICATIONS** Conformity verified according to the standard document UNI EN ISO 12100

**ACCESSORIES** Fastening systems:  
CLW (Clamp for Wooden formworks);  
CLS (Clamp for Steel formworks); CRS  
(Cradle for Steel concrete moulds)

